



# ACUCRAFT FIREPLACE SPEC SHEET

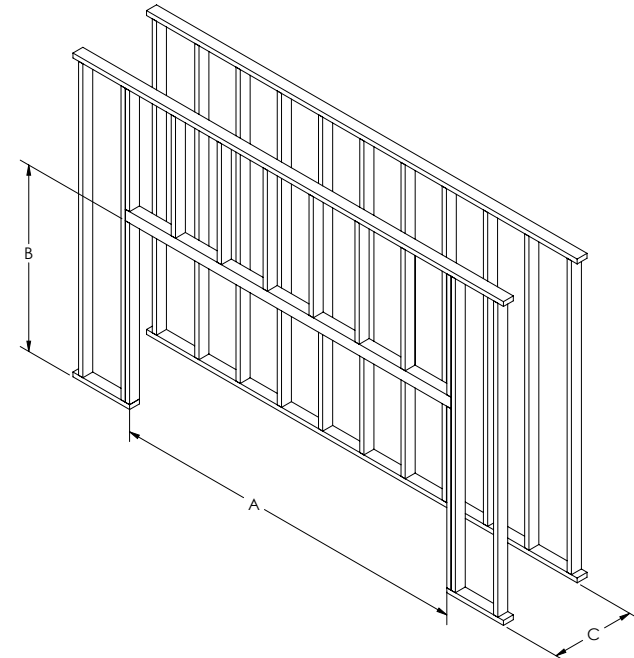
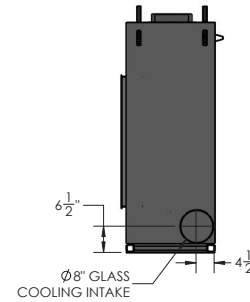
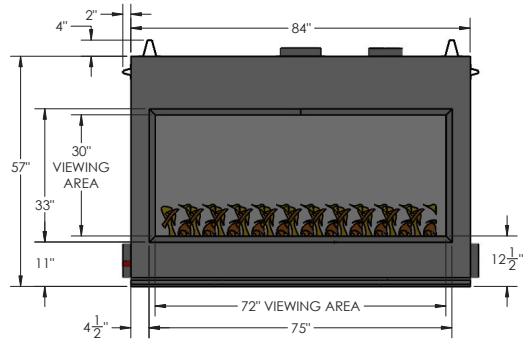
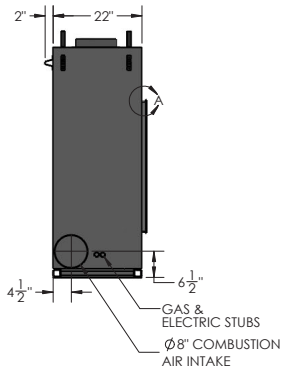
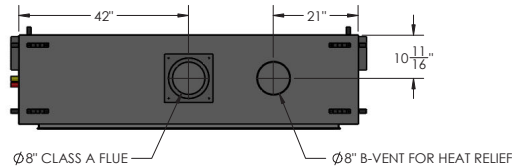
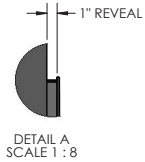
MODEL: A-BL-6-SST  
SERIES: BLAZE

## DIMENSIONS

<b>Viewing Area:</b>	72"W x 30"H, Sealed
<b>Dimensions:</b>	84"W x 57"H x 22"D

## FRAMING SPECIFICATIONS

A	B	C
88"	61"	24"



Acucraft Fireplaces  
Big Lake, MN  
Acucraft.com  
888-317-6499  
info@acucraft.com



# ACUCRAFT FIREPLACE SPEC SHEET

MODEL: A-BL-6-SST

SERIES: BLAZE

## DESCRIPTION

### Experience The Acucraft Difference with our BLAZE Linear Gas Fireplaces.

Designed with commercial grade components and thick, 7-gauge steel, the BLAZE linear gas fireplaces fit seamlessly in restaurants, hotels and residential homes. Modern, clean & the tallest flames on the market will create the ultimate ambiance!

## FEATURES & BENEFITS

- Viewing Sizes & Styles
- Tallest Flames on the Market
- 5-Year Warranty on Acucraft's Ignition System
- Lifetime Warranty on the Firebox
- Commercial Grade Components
- Rigorous Testing Including: Functionality, Safety, ANSI Z21.50 with Label
- Popular Customization Options
- Worldwide Shipping Direct to Your Job Site
- Designed & Manufactured in Minnesota, USA

## SPECIFICATIONS

<b>Viewing Area:</b>	72" W x 30" H	<b>BTUs/Hour:</b>	100,000
<b>Fireplace Dimensions:</b>	84" W x 57" H x 22" D	<b>Combustion Air Intake:</b>	8"
<b>Burner Length:</b>	66"	<b>Class A Flue Size:</b>	8"
<b>Min. Inlet Pressure:</b>	7" W.C. NG, 11" W.C. LP	<b>Max. Inlet Pressure:</b>	14" W.C. NG, 14" W.C. LP
<b>Fuel Type:</b>	Natural Gas or Propane	<b>Controls:</b>	On/Off Switch
<b>Power Venting:</b>	Enervex RS9 (Flue), FG8XL (Heat Relief)	<b>Electrical:</b>	110V AC

<b>Clearance to Combustibles:</b>	2" Sides, 4" Height, 2" Depth
<b>Testing Standards:</b>	ANSI Z21.50
<b>Media Options:</b>	1/4" or 1/2" glass media, rock options, log sets
<b>Interior Options:</b>	Mesh, reflective panels, LED lighting
<b>Mantel Clearances:</b>	12" top of face/trim, 6" off sides of face/trim

Acucraft Fireplaces  
 Big Lake, MN  
 Acucraft.com  
 888-317-6499  
 info@acucraft.com